

Light efficiency:

**104 Lumen/Watt**

Light quality:

**CRI: 91.3**

Color temperature:

**3050 K**

**Output: 1605 lm**

**Peak: 2756 cd**

**Power: 15.4 W**

**PF: 0.99**

No photo

Tracking number: [n/a](#)

Product name:

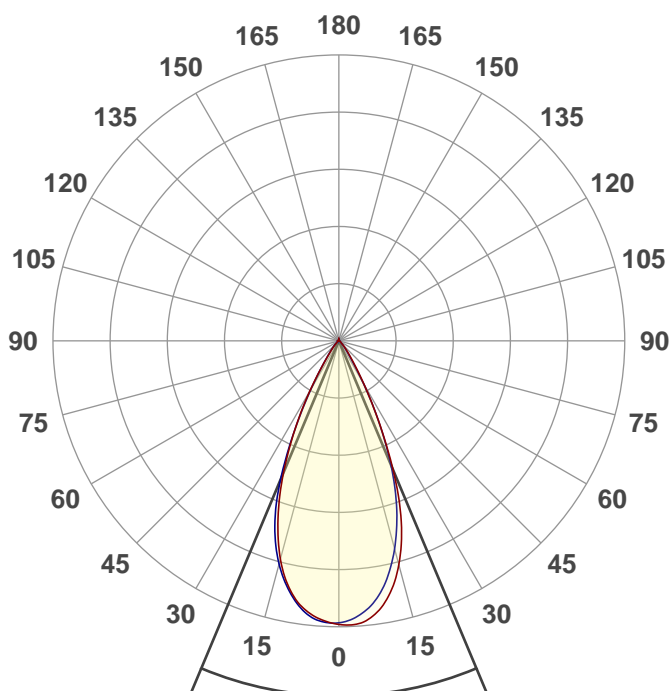
**TR0606\_L159304D**

Item number:

Date and time:

**6/10/2021 1:03:32 PM**

Description:



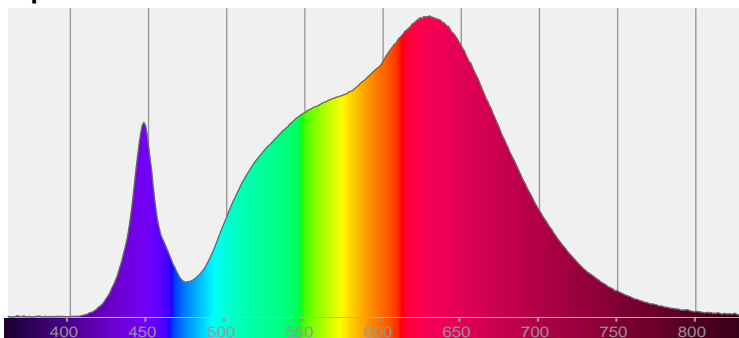
Beam angle

**45.6°**

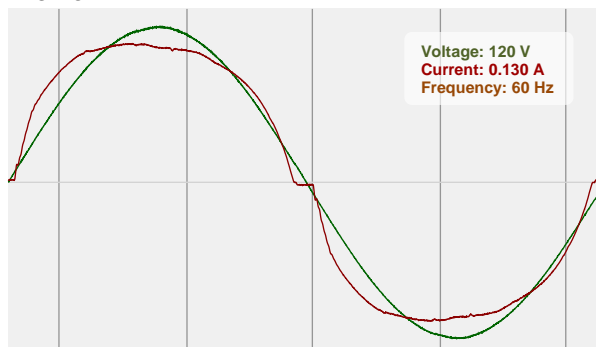


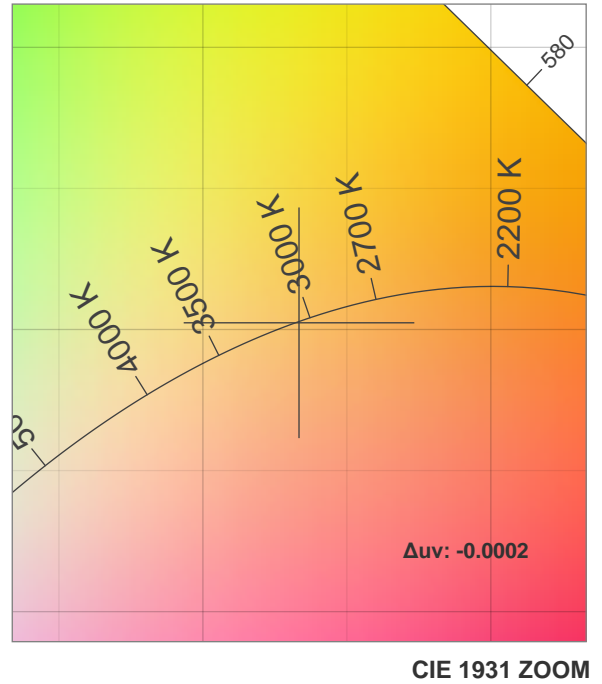
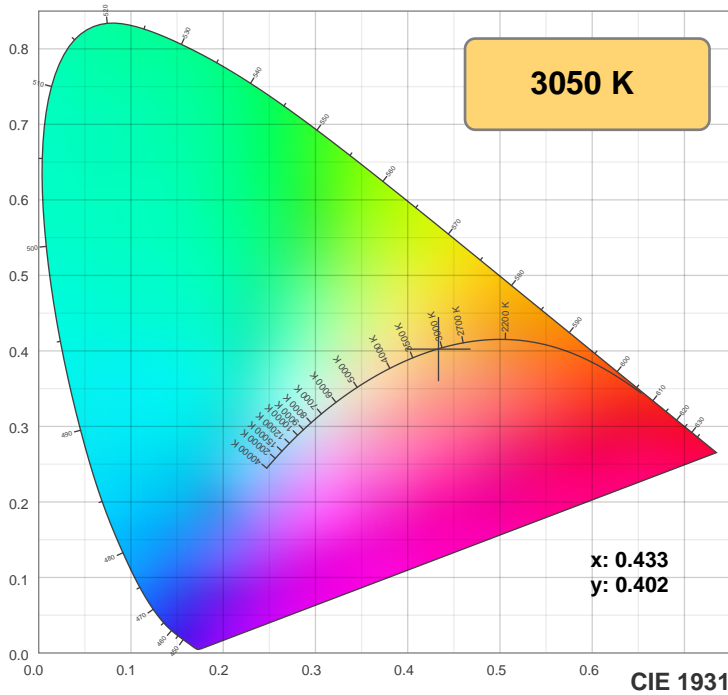
CIE 1931  
x: 0.433  
y: 0.402

Spectra

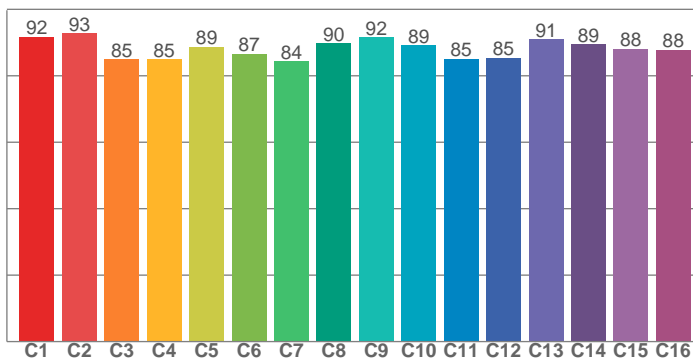


Power

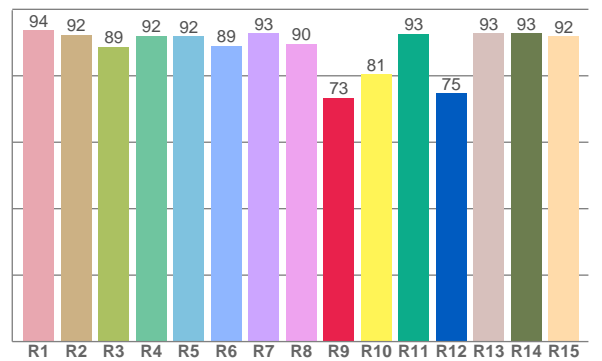




**TM30: 88.4**



**CRI: 91.3 (R1-R8)**



CRI R values, only R1-R8 are used to calculate final CRI value

R1	R2	R3	R4	R5	R6	R7	R8	R9	R10	R11	R12	R13	R14	R15
93.7	92.3	88.8	92.1	91.8	89.0	92.7	89.6	73.4	80.5	92.6	74.8	92.9	92.7	91.9

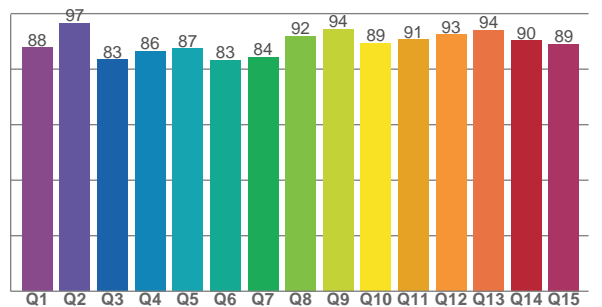
TM30 C values, 16 binned values out of total of 99 C values

C1	C2	C3	C4	C5	C6	C7	C8	C9	C10	C11	C12	C13	C14	C15	C16
91.7	92.8	84.9	84.9	88.8	86.6	84.4	89.7	91.5	89.2	85.0	85.4	91.0	89.5	88.1	87.8

CQS Q values

Q1	Q2	Q3	Q4	Q5	Q6	Q7	Q8	Q9	Q10	Q11	Q12	Q13	Q14	Q15
87.8	96.5	83.4	86.5	87.4	83.2	84.3	92.0	94.4	89.3	90.7	92.5	94.0	90.3	89.0

**CQS: 88.6**



## Color parameters

Color temperature	Color rendering index	Red component	Color fidelity	Color gamut	Color quality scale	Color coordinate cie 1931	Color coordinate cie 1931	Color coordinate	Color coordinate	Color deviation from black body
CCT	CRI	CRI R9	TM30 Rf	TM30 Rg	CQS	x	y	u	v	$\Delta uv$
3050 K	91.3	73.4	88.4	104.4	88.6	0.433	0.402	0.249	0.347	-0.0002

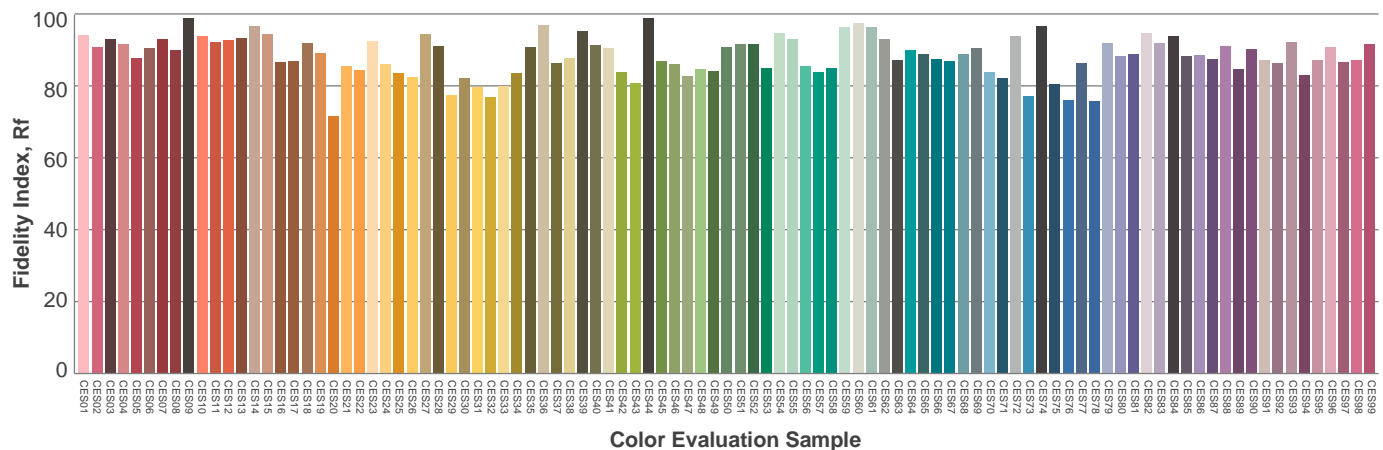
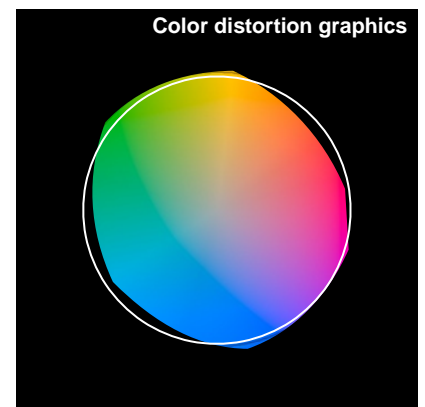
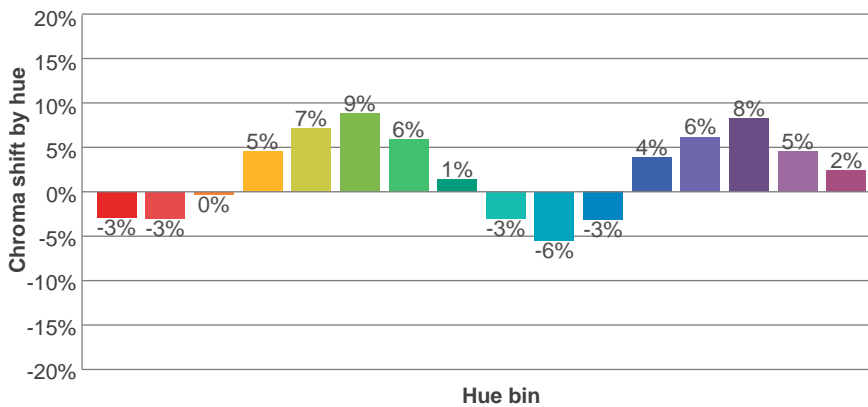
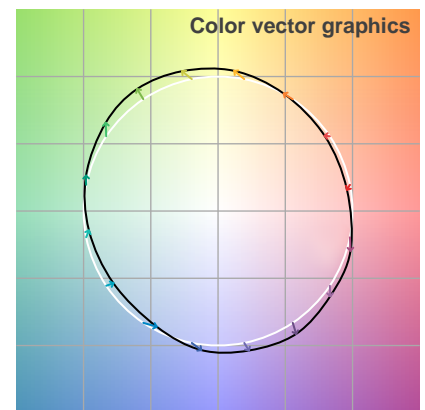
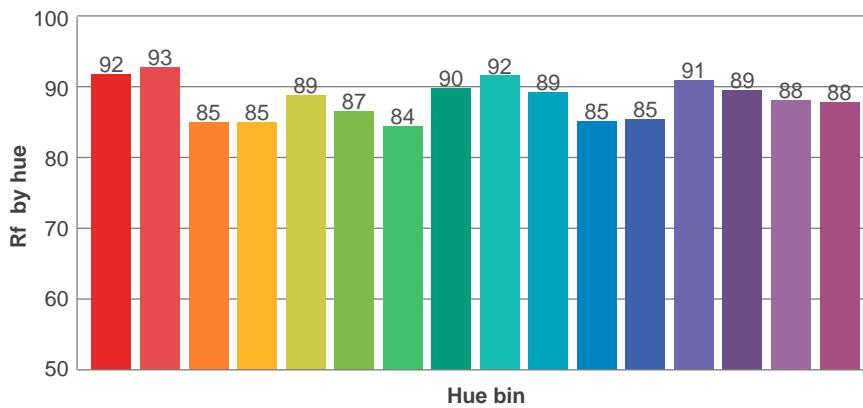
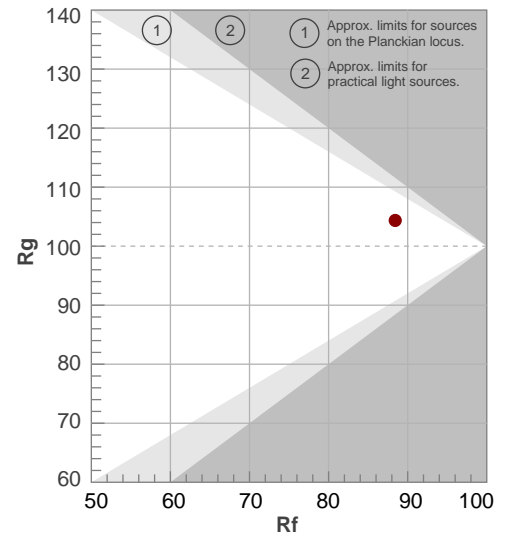
**Rf 88.4**

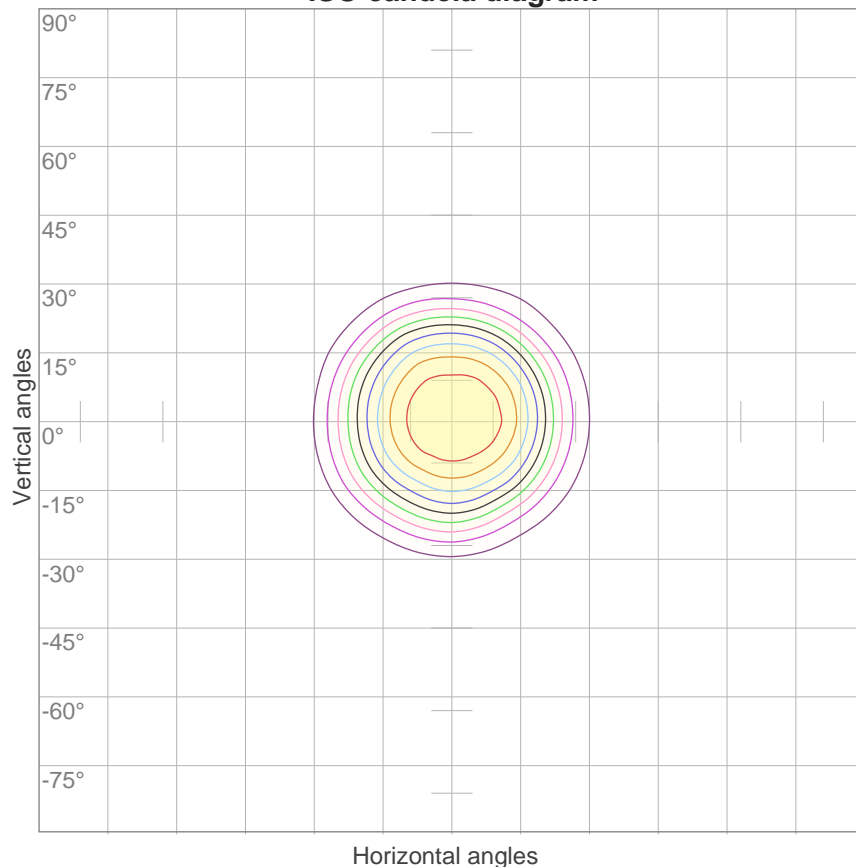
Fidelity index Rf

**Rg 104.4**

Gamut index Rg

Hue Bin	R <sub>f</sub>	Graphic shifts (%)	
		Chroma	Hue
1	92	-3%	-3%
2	93	-3%	3%
3	85	0%	8%
4	85	5%	8%
5	89	7%	6%
6	87	9%	0%
7	84	6%	-8%
8	90	1%	-7%
9	92	-3%	-5%
10	89	-6%	1%
11	85	-3%	10%
12	85	4%	8%
13	91	6%	2%
14	89	8%	-2%
15	88	5%	-6%
16	88	2%	-10%



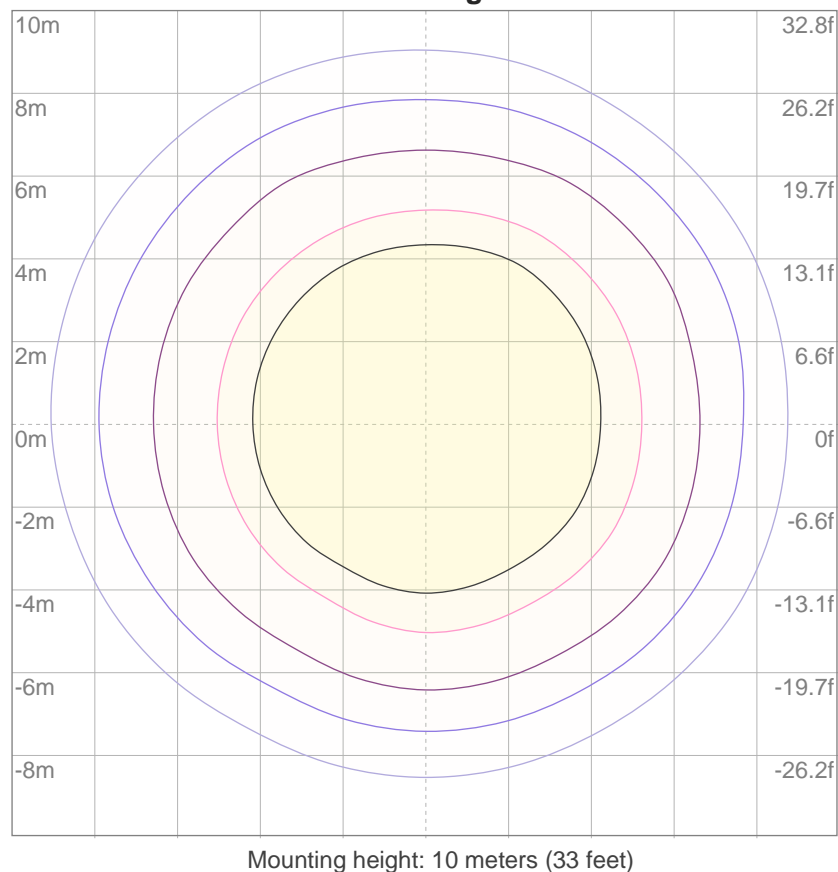
**ISO candela diagram**


10%	274 cd
20%	548 cd
30%	823 cd
40%	1097 cd
50%	1371 cd
60%	1645 cd
70%	1920 cd
80%	2194 cd
90%	2468 cd

**Conditions:**

Number of c-planes: 12

Candela at center: 2742 cd

**ISO lux diagram**


3%	0.823 lx
5%	1.37 lx
10%	2.74 lx
30%	8.23 lx
50%	13.7 lx

**Conditions:**

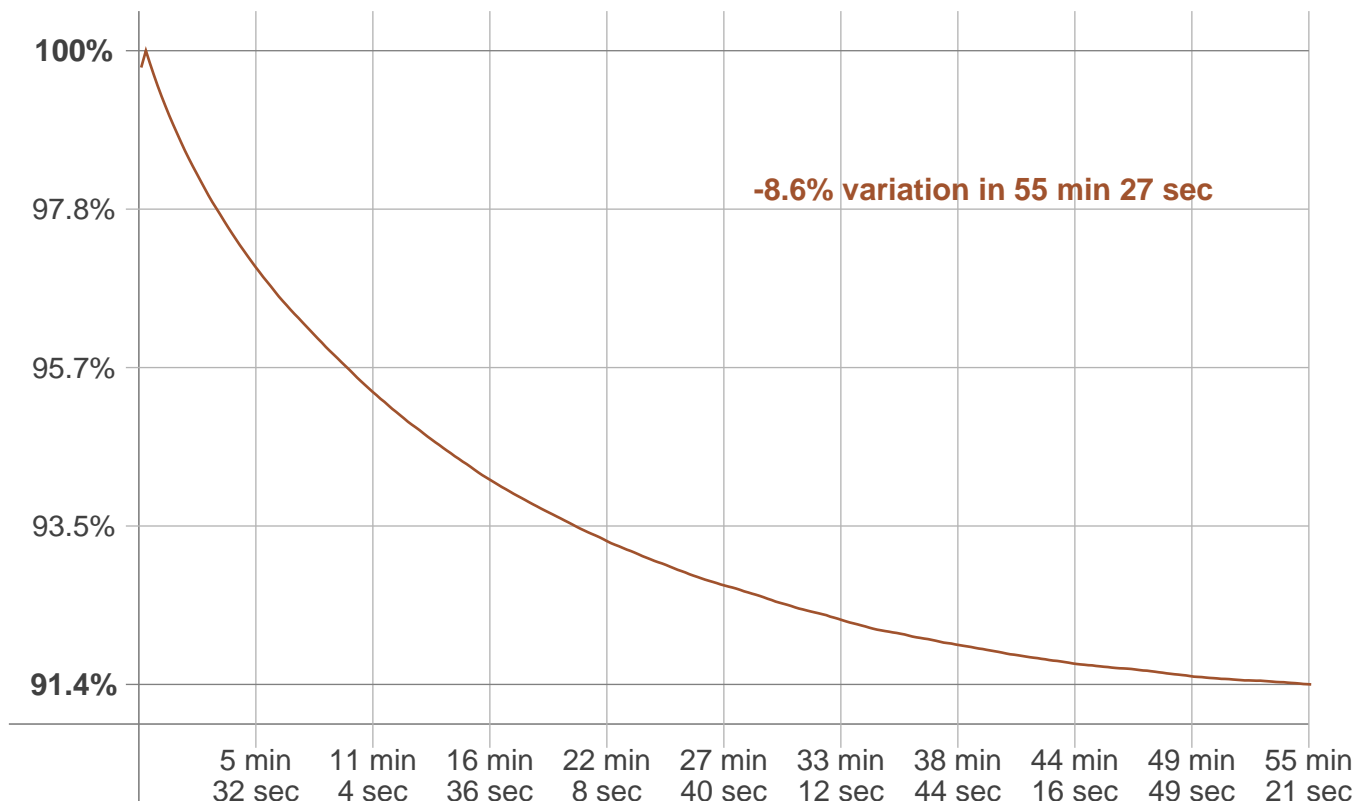
Number of c-planes: 12

Lux at center: 27.4 lx

*Lux distribution on a surface  
when lamp is mounted at 10  
meters from the surface.*

## Stabilization

### Warmup curve



### Warmup result

Warmup time:	55 min 30 sec
Warmup variation	-8.8%

### Warmup conditions

Stable period:	15 min
Stable change max:	0.5%
Minimum time:	30 min

### Color temperature change

CCT start	CCT change	CCT end
3048 K	+2 K	3050 K

### Output change

Output start	Output change	Output end
1605 lm	1m	1605 lm